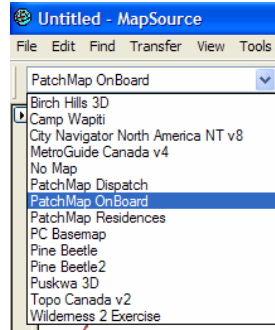


Steps to using PatchMap DisPatch™ ... First the parts:

- Open Garmin's MapSource program.



- If you have installed PatchMap DisPatch there will be a drop down box in the top left corner of the program window. This is where you choose PatchMap DisPatch or PatchMap OnBoard. They both have the same information but the OnBoard version looks and works better in the handheld Garmin GPS units.

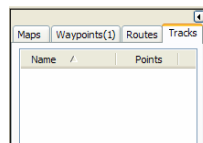


Here's a variety of choices in the dropdown box that is on one of our computers.

- On the top bar are a series of tools. Here we show a couple that have been dragged free from the top bar. They can be placed anywhere in the window.



- In this case, the first tool contains: zoom in, zoom out, zoom level (drop-down), detail/ at zoom level combination (drop-down)... use '**Highest**'.
 - The second tool contains: create new, open, save, print.
 - The third tool contains: cut, paste, paste to clipboard, delete, undo, redo.
 - The fourth tool contains: find, find nearest, find recent.
 - The fifth tool contains: receive from device, send to device.
 - The first floating tool contains: map selection, box zoom, drag window, create waypoint, create route, select tool, measure tool.
 - The second floating tool contains: create a track, erase a track, select a track, join a track, cut a track.
- On the left side of the map window is a series of tabs. This is where you access the various waypoints, routes, tracks or see which maps you have chosen to upload.




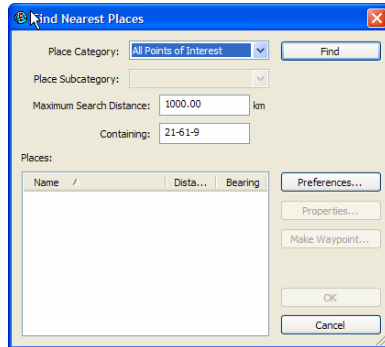
The tab window can be minimized to the left side by pressing the little arrow button in the top right corner; pressing it again brings the window back (notice the arrow direction).

Some tool short cuts are accessed by right clicking rather than left clicking, such as creating a waypoint while using any of the map tool -- selection tools. All of the tools have non graphical

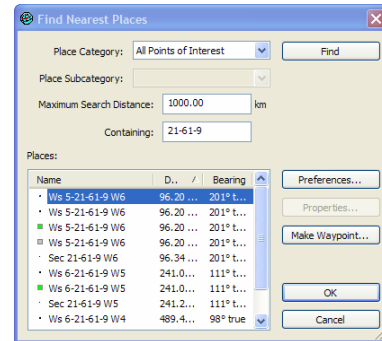
File Edit Find Transfer View Tools Utilities Help navigators as well.

The Process to Find Wellsites:

- There are two ways to look for an existing wellsite:
- Use the  Find nearest places tool. Chose an appropriate search distance, say 300 km. 'Containing' can be just a portion of a wellsite name. We suggest 'section-township- range'. This will come up with several answers but if the wellsite doesn't yet exist in our dataset, you will at least find the center of the section; from which point you can create a wellsite to route to.

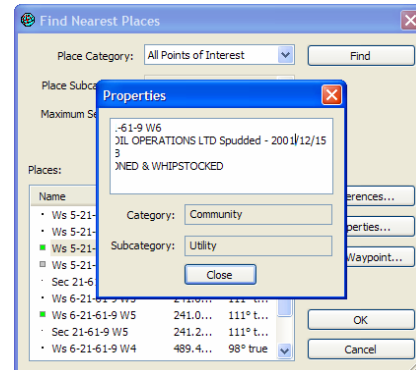
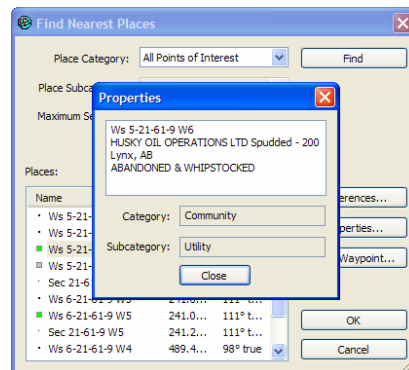


answer:

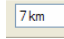


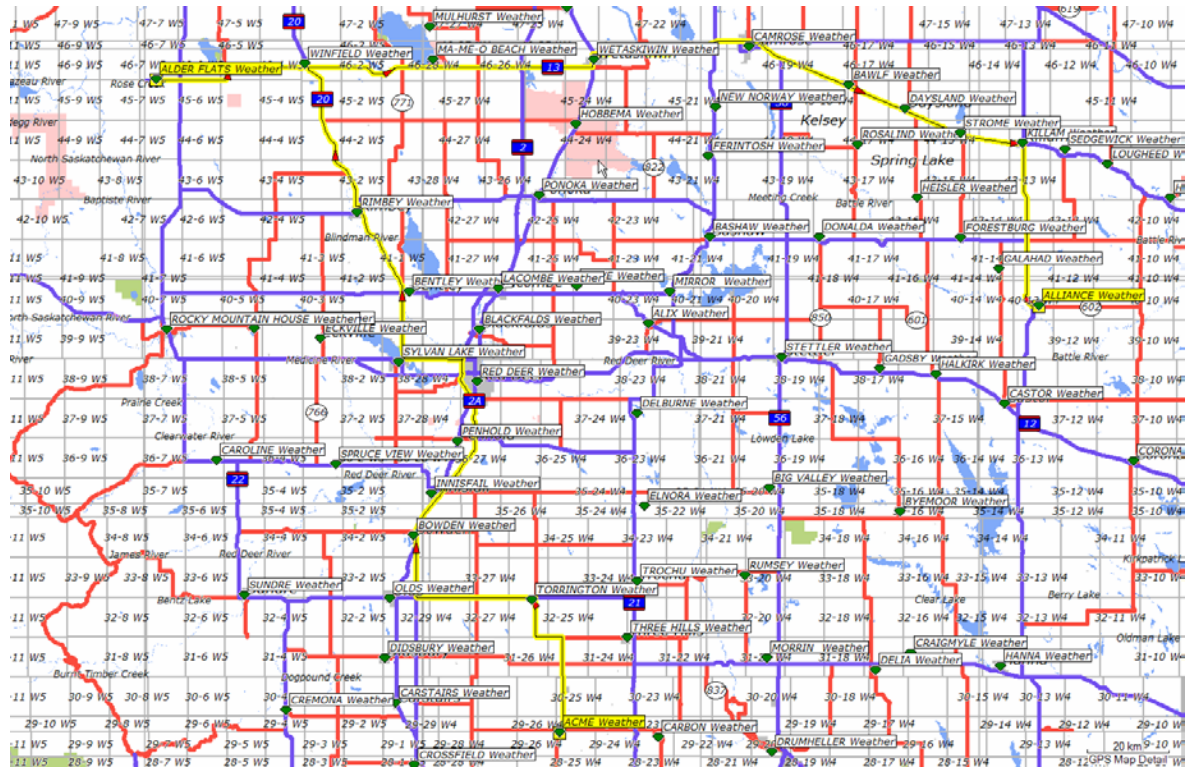
- 'Ws' indicates a wellsite
- 'Sec' indicates center of section
- Green squares indicate an active well
- Grey squares indicate an abandoned well or zone within the well bore
- Black dots are the same wells 'zoomed out' Note: unlike their green or grey counterparts, they have no waypoint properties.


As you choose any of these locations, the map is dynamically taken to that location. If you choose one that has a grey or green square, the 'Properties' box becomes available.



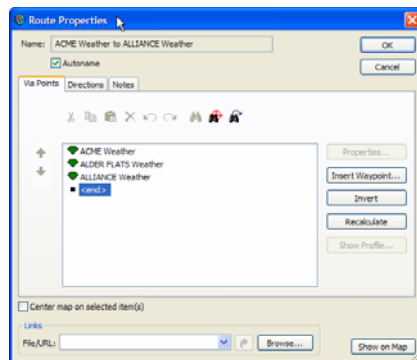
within the Properties window is: Wellsite name, Operator (may not be the owner), when they started to drill, the strike zone; the Province; working or not working status. Once you've decided that this is the right wellsite, click the Make Waypoint button where you can change the default name, change the default symbol, add a comment that can be as long as you want, add it to an appropriate category (depending on your line of work), link it to a file within your computer or network .. or even to an outside webpage. Your imagination is the limit...

- The second way to find a Wellsite is Graphically. First use the Zoom drop-down tool  and choose 7km. At this zoom level you can see a large part of the countryside and all the

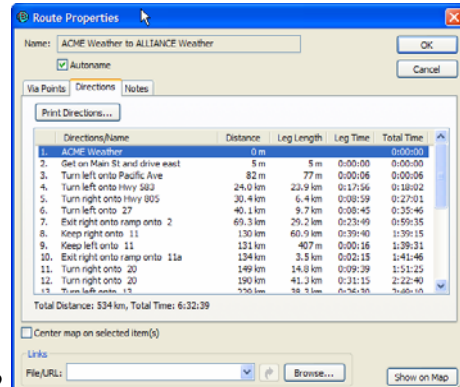


2. The second way to create a route is to graphically pick the points off of the map using the routing tool . When you have waypoints already created, this is easy as the tool intelligently snaps to the waypoint as you get close so this is as simple as zooming out and (hover) click, (hover) click, (hover) click.

A Route is created.. now what?



Here's the Route:



Note the Directions tab?

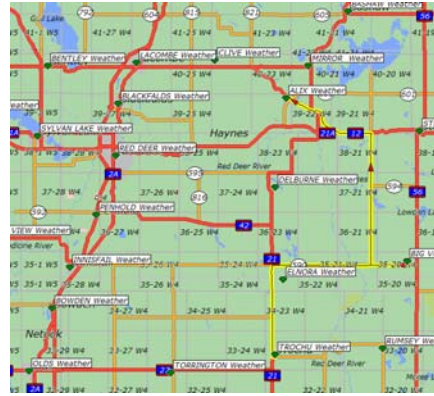
Note that there is a total distance and time.

Directions/Name	Distance	Leg Length	Leg Time	Total Time
1. ACME Weather	0 m			0:00:00
2. Get on Main St and drive east	5 m	5 m	0:00:00	0:00:00
3. Turn left onto Pacific Ave	82 m	77 m	0:00:06	0:00:06
4. Turn left onto Hwy 583	24.0 km	23.9 km	0:17:56	0:18:02
5. Turn right onto Hwy 805	30.4 km	6.4 km	0:08:59	0:27:01
6. Turn left onto 27	40.1 km	9.7 km	0:08:45	0:35:46
7. Exit right onto ramp onto 2	69.3 km	29.2 km	0:23:49	0:59:35
8. Keep right onto 11	130 km	60.9 km	0:39:40	1:39:15
9. Keep left onto 11	131 km	407 m	0:00:16	1:39:31
10. Exit right onto ramp onto 11a	134 km	3.5 km	0:02:15	1:41:46
11. Turn right onto 20	149 km	14.8 km	0:09:39	1:51:25
12. Turn right onto 20	190 km	41.3 km	0:31:15	2:22:40
13. Turn left onto 13	229 km	38.3 km	0:26:30	2:49:10
14. Turn right onto Street	267 km	38.9 km	0:31:02	3:20:12
15. ALDER FLATS Weather	268 km	434 m	0:02:30	3:22:42
16. Get on Street and drive east	268 km	36 m	0:00:00	3:22:42
17. Turn left onto 13	268 km	398 m	0:00:30	3:23:12
18. Turn left onto 2a	377 km	109 km	1:13:55	4:37:07
19. Keep right onto 2a	380 km	3.1 km	0:06:13	4:43:20
20. Turn right onto 36	491 km	111 km	1:12:25	5:55:45
21. Bear left onto Hwy 602	532 km	40.5 km	0:29:13	6:24:58
22. Turn left onto 2 St W	534 km	1.9 km	0:01:13	6:26:11
23. Turn right onto Railway Ave	534 km	135 m	0:03:22	6:29:33
24. Turn left onto Main St	534 km	296 m	0:01:16	6:30:49
25. ALLIANCE Weather	534 km	56 m	0:01:50	6:32:39

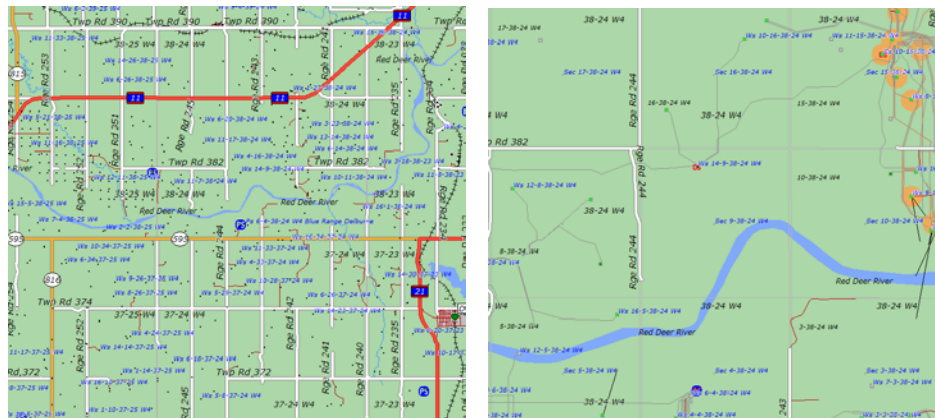
Note the Print Directions Button?

Do you want to print maps as well?

- Easy as zooming into the area that you want and printing what is on the screen. We usually print the whole route and a couple or three at critical road turns ... as the job dictates.




- At the 3km level all the wellsites, plantsites, compressors and all lower grade roads become visible.

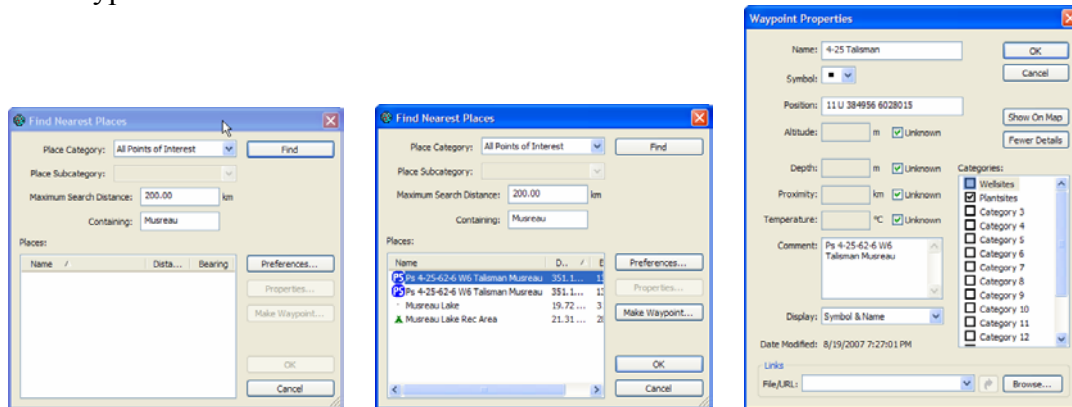


- At the 700m level all the Sections, pipelines and wellsites become visible, along with feature information, sour well and pipeline color codes; drill path to bottom holes on directionally drilled wellsites etc. ... oh... and you can transfer all this to a Garmin GPS and it will route you right to the site... what about that?

Typical Example..

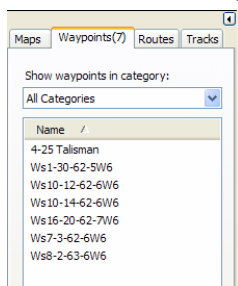
You've been asked to meet a field operator at the Talisman Musreau plantsite, who'll be taking you to the following wellsites for you to look at: 7-3-62-6, 10-12-62-6, 10-14-62-6, 1-30-62-5, 8-2-63-6 (OK, the operator already knows where to go, but you'd like to fit in a visit to another location for another client .. 16-20-62-7... Will you have time ?)

Using  'Find Nearest Places' you type in 'Musreau', choose the Talisman 4-25 location and make a waypoint at the Plantsite. (that was hard eh?) Note the name was changed to something that you would use but the entire name is duplicated in the comment area automatically. Anything else that you want to be attached to the waypoint can be in the File/URL link at the bottom.

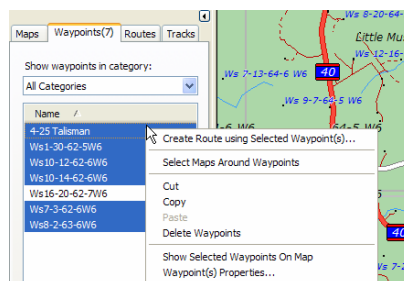
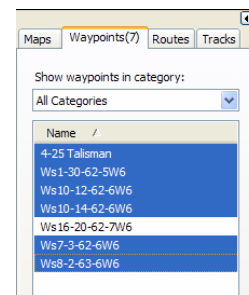


This could be a file/folder that you already have regarding previous work for this Plantsite or it could be a link to a product on the web that you think you could interest them into using... etc etc.

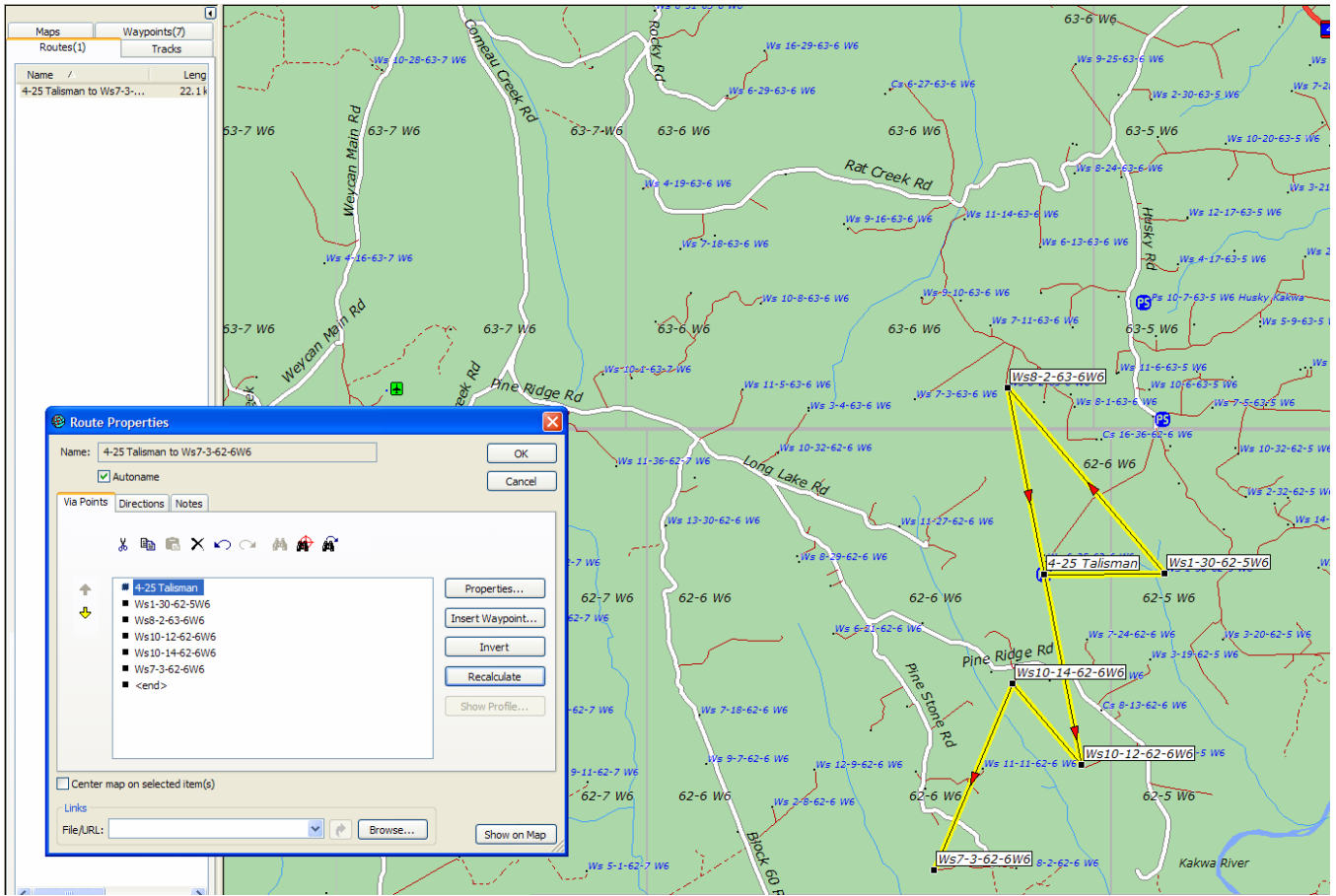
- Next, as you already know that the leases will be in reasonable proximity to this plantsite, you can start looking for them on the map.
- At the 700m zoom level, you can see 12-16 sections depending on your screen size so you should be able to create waypoints at these locations quite quickly... or use the above method and shorten the search distance to 50km so that it will find them quickly (stop looking for names sooner)
- Soon you'll have 7 Waypoints: The plantsite, 6 wellsites that you'll visit and 1 more that you hope to hit on the way home. The order that you visit these locations may be dictated by the field operator, but if you have the most efficient route up your sleeve, how could that be bad ?
- Let's create a route using all but the 16-20 location:



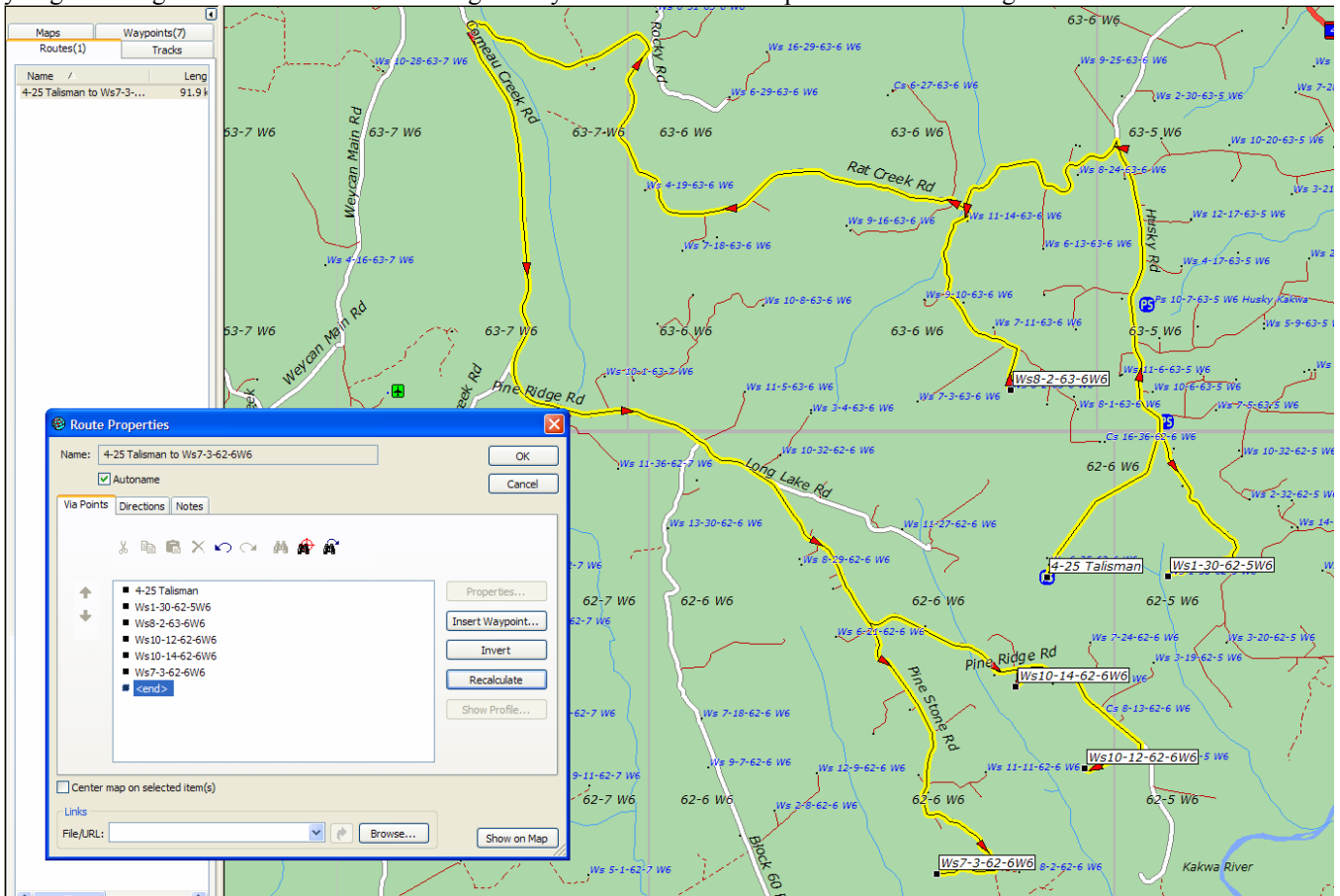
Highlight them using the control/shift keys



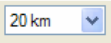

and right click to create the desired route.



you get a straightline route which would be great if you were a bird... so press Recalculate to get a road based route.

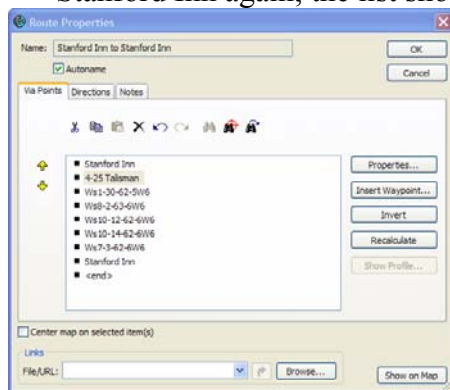


Well that looks like a lot of driving.. but just how much?

- Press the Directions tab and retrieve the information: 91.9 km and 2hr 17min.
- Well, you have to get there and back... just how far from the Stanford Inn is it altogether?
- I guess that we need to put the Stanford Inn in as a waypoint.... Zoom out to 20 km  box zoom  to the west end of Grande Prairie and create a new waypoint at the approximate location .. now we can include the waypoint into the route at the front and at the back...



- Open the Route and press Insert Waypoint, choose Stanford Inn and it appears at the bottom of the list.
- Highlight the top of the list (4-25 Talisman) and again press Insert Waypoint and choose Stanford Inn again; the list should look like this:



again recalculate; The Directions tab now indicates a 325km round trip and 5hrs. 28 min. (your calculation will vary depending on the speeds set under Edit/Preferences/Routing tab/ Driving Speeds)

- My instincts are to put off the visit to 16-20-62-7.... Where did that guy's number go?
- Hey, wait a minute, that's a long way out there for one lease... just how much further would it be if you did visit 16-20?
- Well, add it in just above the bottom Stanford and recalculate: 340km and 5hrs 54min.
- Tough call but it is doable....

If you were comfortable with having a laptop open while driving you could use Garmin's nRoute program that, when connected to a Garmin GPS (typically a USB 18) you could then drive this route, and see where you were at all times, get pleasant instructions from some nice lady,(sometimes known as Bitch'n Betty) and always know how long and how far is left to go.

- Any (routable) Garmin GPS can be loaded up with this mapping and give you dynamic routing while on the road... miss a turn; recalculate... etc.
- The exact unit is based on personal usage and personal taste but we would be happy to help.