

Summary

This document describes the process that the user will undertake to upgrade the detector firmware (software) on their CTX 3030.

Firmware upgrades can be done easily via XChange 2 or manually via a file transfer method when XChange 2 is not available e.g. if using a Mac.

Upgrade using XChange 2

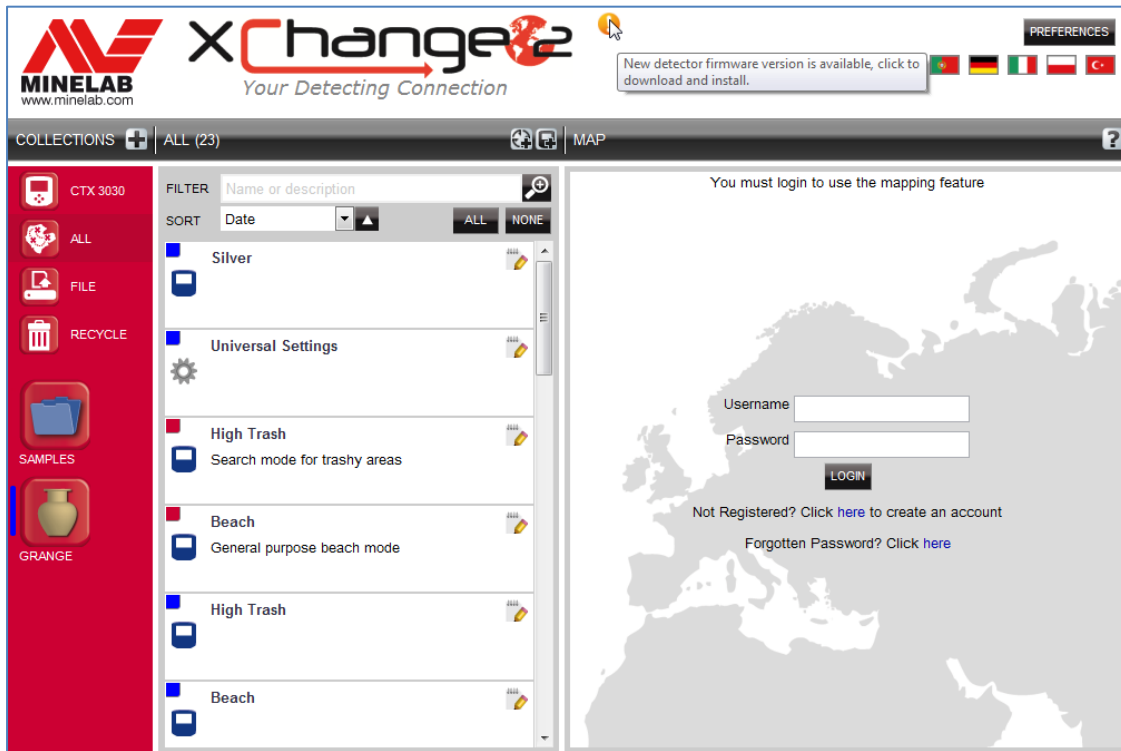
1. CTX 3030 Connected and update available

When the CTX 3030 is connected to the PC and XChange 2 is running the CTX 3030 collection will be displayed. If an update is available the update icon will be displayed at the top of the screen.



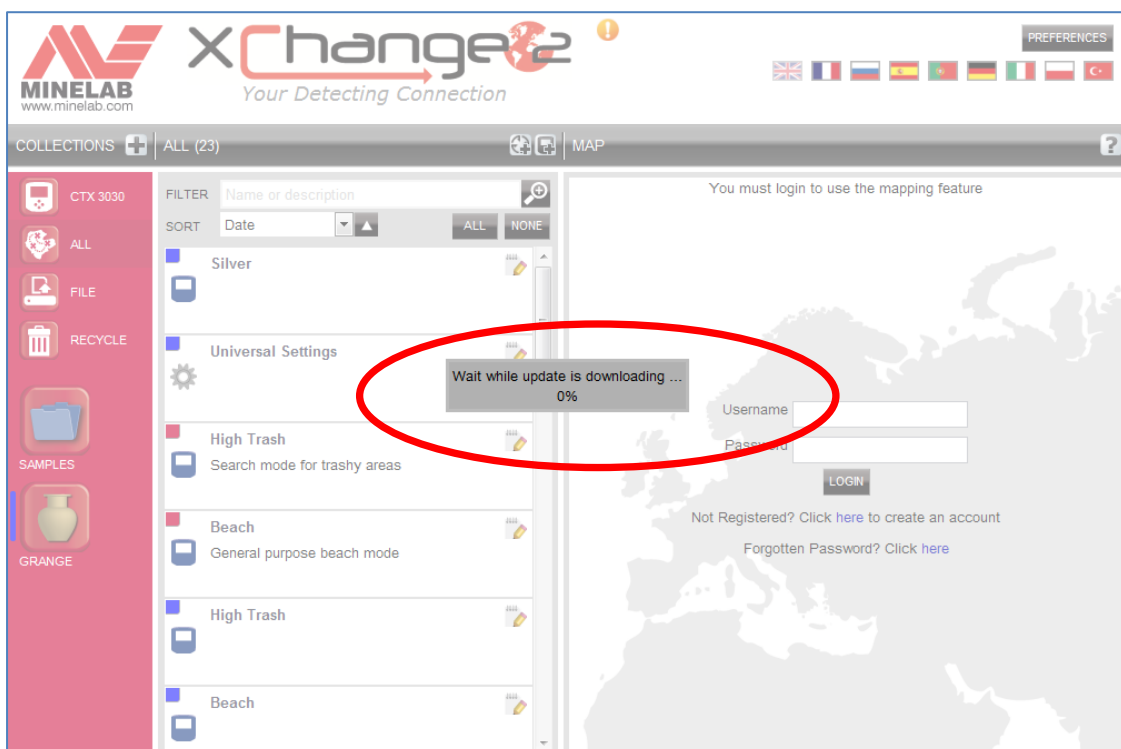
2. Hover over update icon

The user can hover over the update icon and it will describe the update that is available.



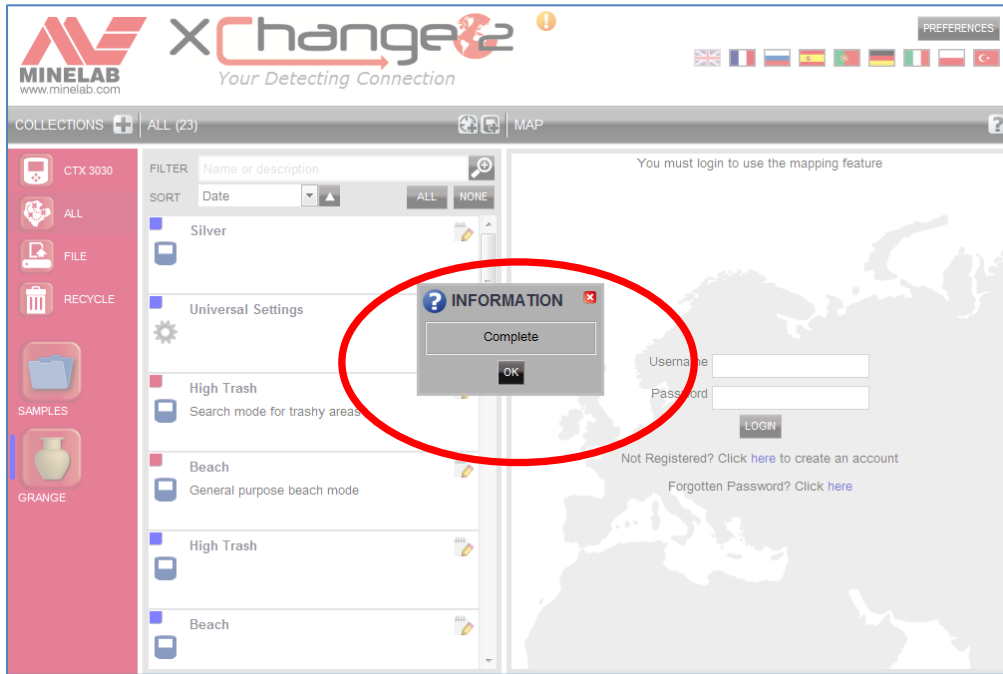
3. Update icon click

When the update icon is clicked the update process is initiated. A progress bar indicating the download progress will be displayed.



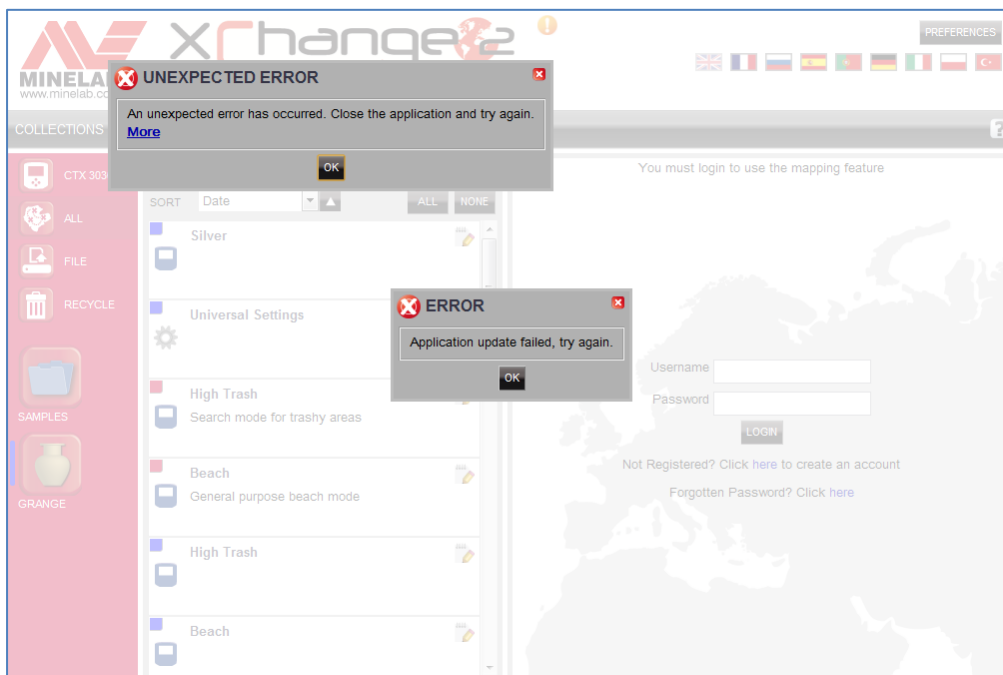
4. Update download completion

When the CTX 3030 update has been downloaded from the internet a dialog window will be displayed indicating that it is complete. The user must now unplug the detector and follow the CTX 3030 Upgrade process (steps 5 – 8). Warning: If the user turns the detector off at this point the upgrade will not be performed.



Update download failure

If the download of the update fails for any reason then the following dialog is displayed. The user must re-commence the process.

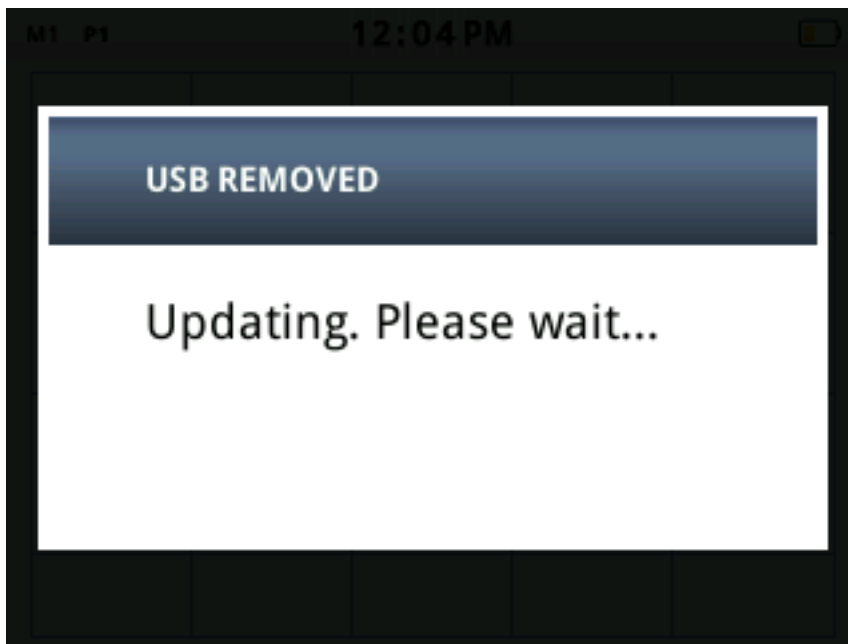


CTX 3030 Upgrade Process

5. Disconnect the CTX 3030 from the PC USB

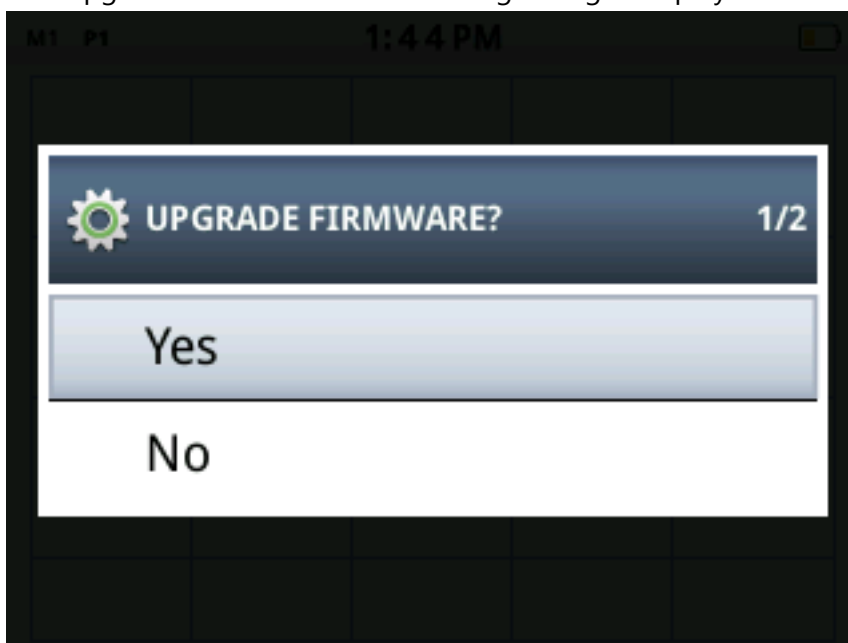
Warning: If the user turns the detector off before step 8, the upgrade will not be performed.

Disconnect the CTX 3030 from the PC by ejecting the USB drive and then unplugging the USB cable. The following dialog is displayed on the detector.



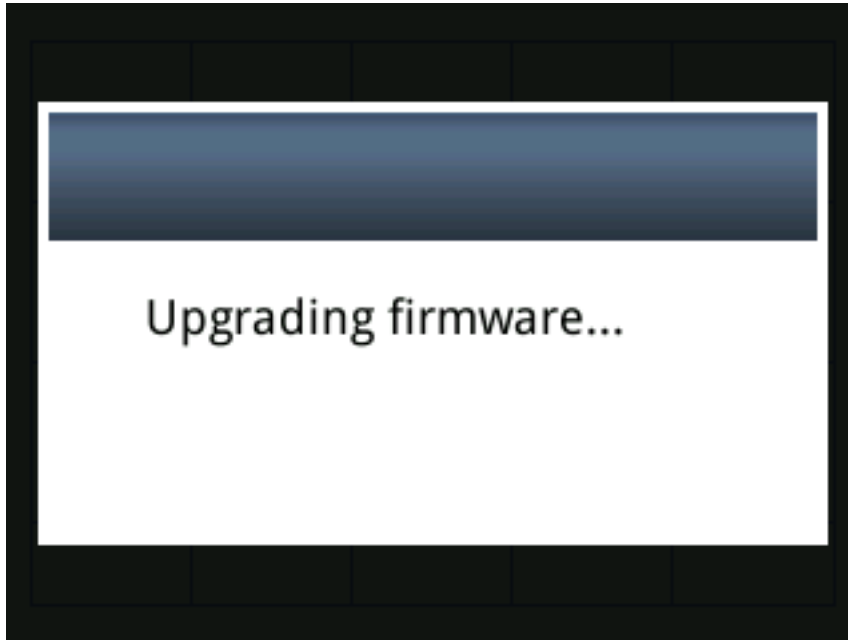
6. Upgrade firmware dialogue

If an upgrade file is found the following dialog is displayed.



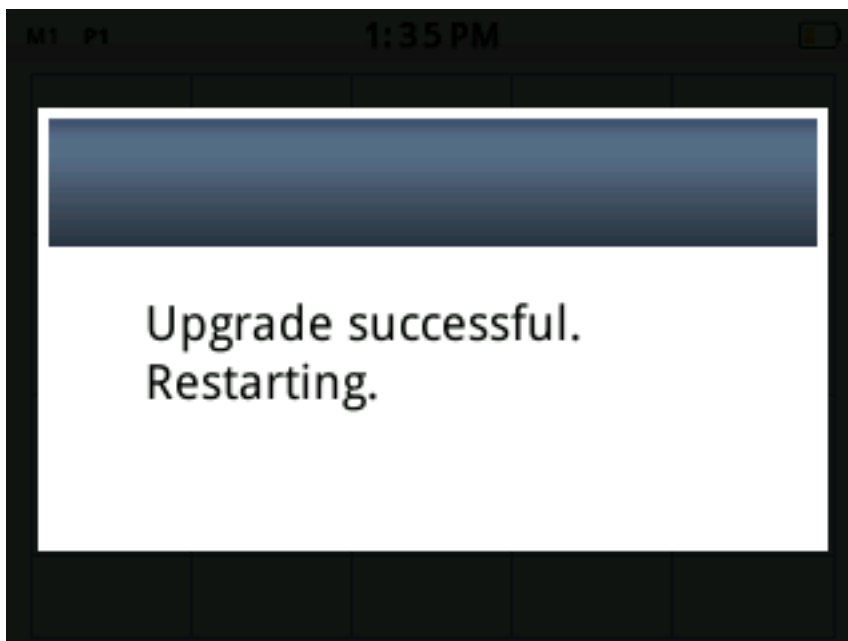
7. Upgrade progress

Select Yes using the Menu/Select button and the following dialog is displayed.



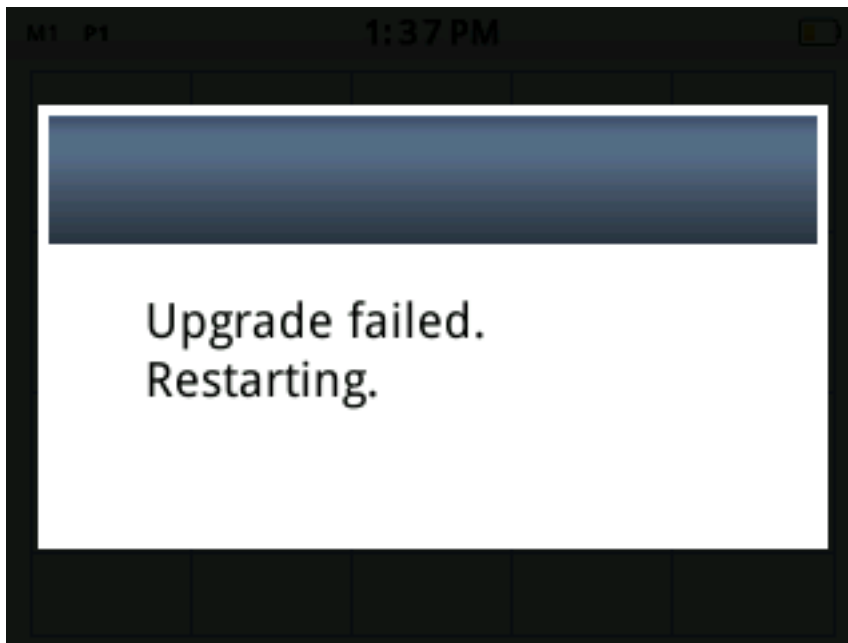
8. Upgrade success

If the upgrade is successful, the following dialog is displayed then CTX 3030 will restart with new firmware.



Upgrade failure

If the upgrade fails, the following dialog is displayed then CTX 3030 will restart with existing firmware.

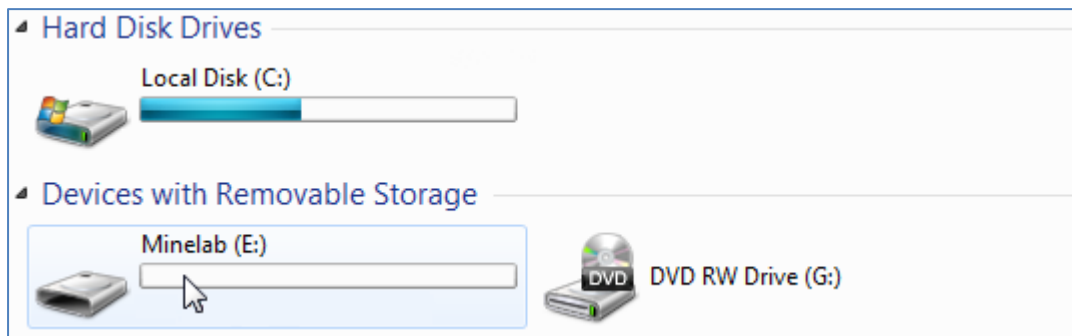


Manual Upgrade

If the user is manually applying the upgrade file instead of using XChange 2 the process is the same on the detector side but the user must place the upgrade file on the detector drive.

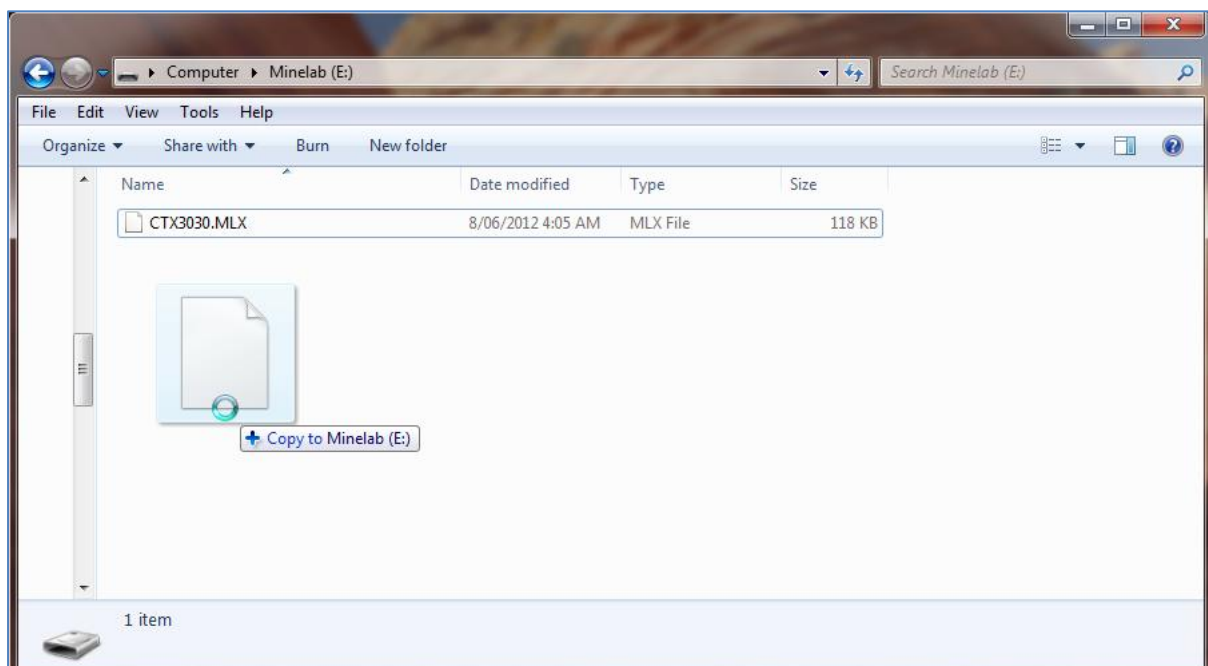
1B. USB Connected

When the CTX 3030 is connected to the PC the CTX 3030 will be available as a standard mass storage device on the computer with a label of Minelab.



2B. Copy upgrade file to the 'Minelab' drive

The user must open the 'Minelab' drive and copy the upgrade file onto it.



Go to step 5

After the file has been copied to the Minelab drive, the user must now unplug the detector from the computer and follow the CTX 3030 Upgrade Process, steps 5-8 above.